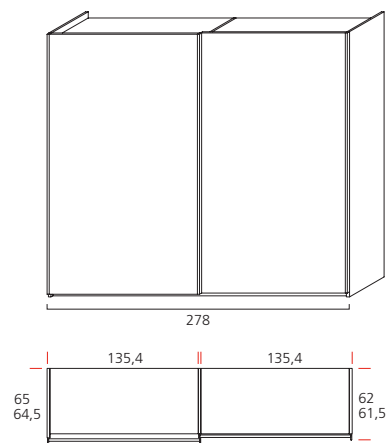
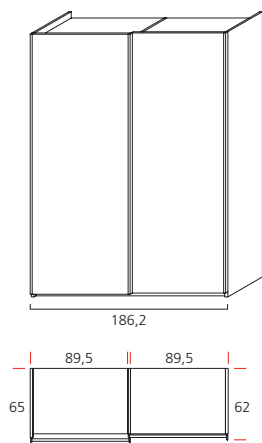


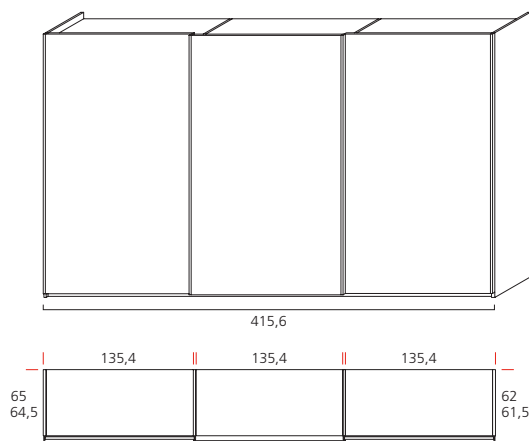
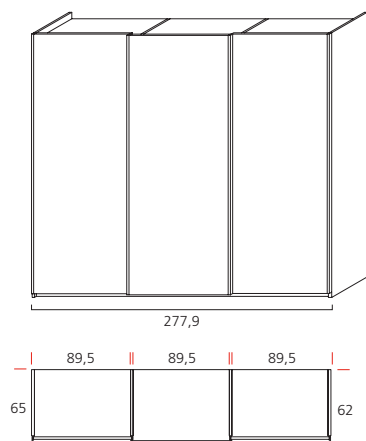
ACCORDO
ARMADI CON ANTE SCORREVOLI
WARDROBES WITH SLIDING DOORS

H.258,4
H.258,4

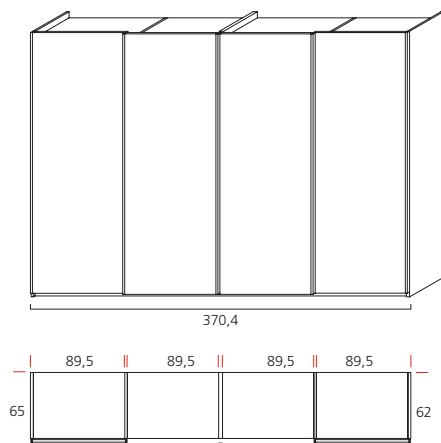
ARMADI 2/A SCORREVOLI
2/ SLIDING DOOR WARDROBES



ARMADI 3/A SCORREVOLI
3/ SLIDING DOOR WARDROBES



ARMADI 3/A SCORREVOLI
3/ SLIDING DOOR WARDROBES



ACCORDO
ARMADI CON ANTE SCORREVOLI
WARDOBES WITH SLIDING DOORS

TIPOLOGIA DI ANTE
DOORS TYPES



NF1

Anta a 3 pannelli
3-panel door
↔ cm 140



NF2

Anta a 3 pannelli
con fascia vetro
3-panel door
with glass band
↔ cm 140



NV1

Anta con 2 vetri
obliqui
Door with 2 slanted
glass panels
↔ cm 140



NP1

Anta a 2 spessori
Door with 2
different widths
↔ cm 140



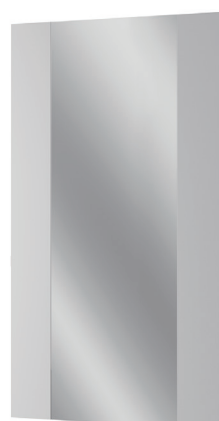
NP2

Anta a 2 spessori
con incisioni
Door with 2
different widths
with engraving
↔ cm 140



NP3

Anta a 2 spessori
con vetro obliquo
Door with 2
different widths
with slanted glass
↔ cm 140



NP4

Anta a 2 spessori
con vetro centrale
Door with 2
different widths
with central glass
↔ cm 140



NL1/NL2

Anta liscia
legno/specchio
Plain door
in wood/mirror
↔ cm 93,6



NL3

Anta liscia
con fascia vetro
Plain door
with glass band
↔ cm 93,6



NR1

Anta con fascia
a pannelli legno
Door with wood
panelled band
↔ cm 93,6

ACCORDO

ARMADI CON ANTE SCORREVOLI

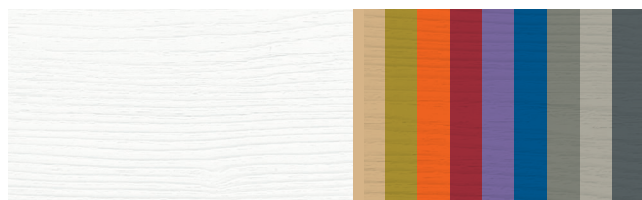
WARDROBES WITH SLIDING DOORS

FINITURE E COLORI

FINISHES AND COLOURS

NOBILITATI

COATINGS



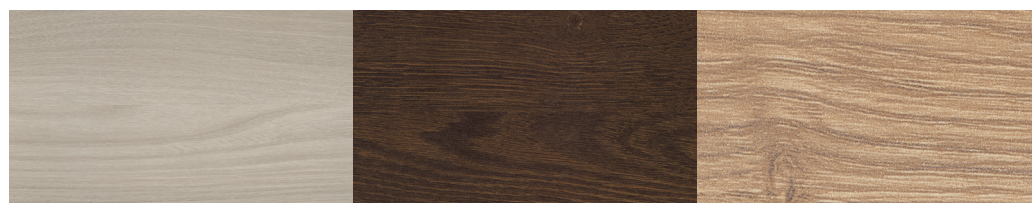
MB MATERICO BIANCO
WHITE TACTILE

ML / MR MATERICO LACCATO OPACO (LACCATI MERCANTINI E LACCATI RAL)
MATT TACTILE LACQUERED FINISH (MERCANTINI LACQUERS AND RAL LACQUERS)

Per i componenti realizzabili con le finiture illustrate consultare attentamente il listino prezzi. Si precisa inoltre che le tonalità dei colori qui riprodotti potrebbero non corrispondere fedelmente a quelle reali, per motivi dipendenti dai limiti connessi alle tecniche di stampa su carta. For components that can be manufactured with the illustrated finishes, review the price list. Note also that the colour shades shown here may not closely correspond to the real ones, due to the paper printing limitations.

NOBILITATI PORO A REGISTRO

REGISTER PORE COATINGS



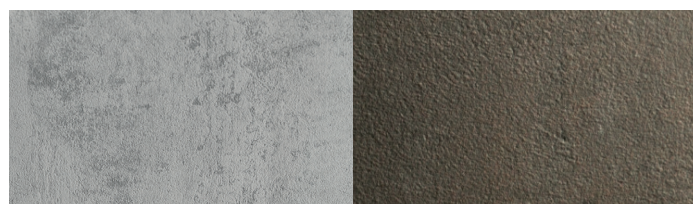
OL OLMO CHIARO
LIGHT ELM

RF ROVERE FIAMMATO
FLAMED OAK

RN ROVERE NATURALE
BROWN WOOD HUE

DECORATIVI

DECORATIVE EFFECTS

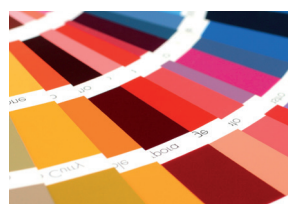


DC EFFETTO CEMENTO
CEMENT EFFECT

DR EFFETTO RUGGINE
RUST EFFECT

LACCATI

LACQUERS



LACCATI RAL / RAL LACQUERS
RL OPACHI / MATT
LX LUCIDI / GLOSSY



LACCATI MERCANTINI / MERCANTINI LACQUERS
RBI BIANCO OPACO / MATT WHITE
LB BIANCO LUCIDO / GLOSS WHITE
LO OPACHI / MATT
LL LUCIDI / GLOSSY
LB GOFFRATI / EMBOSSED

Per conoscere la gamma completa dei colori consulta la cartella Laccati Mercantini. To see the full range of colours see the Mercantini Lacquer chart.

ACCORDO

ARMADI CON ANTE SCORREVOLI

WARDOBES WITH SLIDING DOORS

FINITURE E COLORI

FINISHES AND COLOURS




VETRI EXTRACHIARI

EXTRA-CLEAR GLASSES

ACIDATI ETCHED			
	AB BIANCO WHITE	AG GRIGIO GREY	
VERNICIATI PAINTED			
	VB BIANCO WHITE	VG GRIGIO GREY	TO TORTORA DOVE GREY
	EFFETTO LEGNO WOOD EFFECT		
VLO FINITURA OLMO ELM FINISHES		VLF FINITURA ROVERE FIAMMATO FLAMED OAK FINISHES	VLN FINITURA ROVERE NATURALE NATURAL OAK FINISHES

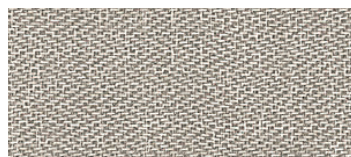
SPECCHI

MIRRORS

		
SP BIANCO WHITE	BR BRONZO BRONZE	SF FUMÈ SMOKED

FINITURE INTERNE

INTERNAL FINISHES



TS LAMINATO EFFETTO TESSUTO SPINATO
LAMINATE WITH TWEED PATTERN

N.B.
Cassettiere legno, cassettera vetro, divisori, ripiani legno, divisori e cartelle per ripiani alluminio possono essere forniti in nobilitato bianco e nei laccati opachi e goffrati.
Wooden drawer units, glass drawer unit, partitions, wooden shelves, partitions and internal sections for aluminium shelves can be provided in white coating, and in matt and embossed lacquers.

LA QUALITÀ MERCANTINI MERCANTINI QUALITY

SISTEMA DI CONFORMITÀ

SYSTEM OF CONFORMITY

Mercantini produce in maniera responsabile ed ecosostenibile, fornendo prodotti di qualità che non hanno rilascio di formaldeide e sostanze nocive. È titolare di certificazione UNI EN 717-1:2004 (COSMOB) nel pieno rispetto di tutti i parametri di sicurezza.

Mercantini manufactures in a responsible and environmentally friendly way, by providing quality products that do not release formaldehyde and harmful substances. It holds certification UNI EN 717-1:2004 (COSMOB) in full compliance with all safety parameters.

CERNIERE

HINGES

Resistenti, tecnologiche, indistruttibili. Le cerniere utilizzate da Mercantini sono in acciaio e testate per 200.000 aperture.

Resistant, technological, indestructible. The hinges used by Mercantini are made of steel and tested to 200,000 openings.

SCORREVOLI

SLIDING PARTS

I profili per scorrevoli Mercantini su cieli e fondi vengono montati, in sicurezza, senza viti a vista; le meccaniche "ricercate" consentono uno scorrimento leggero, silenzioso e affidabile. Le ante sono inoltre provviste di un sistema ammortizzato che, in fase di chiusura, ne rallenta e blocca la corsa.

The profiles of Mercantini's sliding elements, on tops and bottoms are safely assembled, with no visible screws; the refined mechanical devices allow a light, quiet and reliable sliding. The doors are also provided with a shock absorber system which, in the closing stage, slows down and stops its movement.