

## DIMENSIONI / DIMENSIONS

### MANIGLIA VETRO GLASS HANDLE

**28DM31** | *sx/dx - th/rh* | ↔ cm 44,9 ↗ cm 43,3 ↓ cm 23,3 / 25  
**28DM51** | *sx/dx - th/rh* | ↔ cm 58,3 ↗ cm 43,3 ↓ cm 23,3 / 25

COMODINO A 1 CASSETTO  
1 DRAWER NIGHTSTAND



### MANIGLIA LAMIERA SHEET-METAL HANDLE

**28DM32** | *sx/dx - th/rh* | ↔ cm 44,9 ↗ cm 43,3 ↓ cm 23,3 / 25  
**28DM52** | *sx/dx - th/rh* | ↔ cm 58,3 ↗ cm 43,3 ↓ cm 23,3 / 25

COMODINO A 1 CASSETTO  
1 DRAWER NIGHTSTAND



**28DM41** | *sx/dx - th/rh* | ↔ cm 44,9 ↗ cm 43,3 ↓ cm 44,2  
**28DM61** | *sx/dx - th/rh* | ↔ cm 58,3 ↗ cm 43,3 ↓ cm 44,2

COMODINO A 2 CASSETTI  
2 DRAWERS NIGHTSTAND



**28DM42** | *sx/dx - th/rh* | ↔ cm 44,9 ↗ cm 43,3 ↓ cm 44,2  
**28DM62** | *sx/dx - th/rh* | ↔ cm 58,3 ↗ cm 43,3 ↓ cm 44,2

COMODINO A 2 CASSETTI  
2 DRAWERS NIGHTSTAND



**28SM61** | ↔ cm 58,3 ↗ cm 52 ↓ cm 121

SETTIMANALE  
SEVEN DAYS



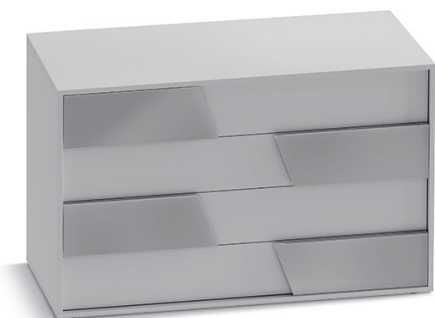
**28SM62** | ↔ cm 58,3 ↗ cm 52 ↓ cm 121

SETTIMANALE  
SEVEN DAYS



**28CM11** | ↔ cm 127,1 ↗ cm 52 ↓ cm 82,6

COMÒ  
DRESSER



**28CM12** | ↔ cm 127,1 ↗ cm 52 ↓ cm 82,6

COMÒ  
DRESSER



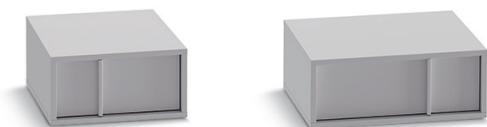
## DIMENSIONI / DIMENSIONS

### MANIGLIA PROFILO HANDLE PROFILE

**28DM33** | *sx/dx - th/rh* | ↔ cm 44,9 ↗ cm 43,3 ↓ cm 23,3 / 25

**28DM53** | *sx/dx - th/rh* | ↔ cm 58,3 ↗ cm 43,3 ↓ cm 23,3 / 25

**COMODINO A 1 CASSETTO**  
1 DRAWER NIGHTSTAND



### MANIGLIA LACCATA LACQUERED HANDLE

**28DM30** | *sx/dx - th/rh* | ↔ cm 44,9 ↗ cm 43,3 ↓ cm 23,3 / 25

**28DM50** | *sx/dx - th/rh* | ↔ cm 58,3 ↗ cm 43,3 ↓ cm 23,3 / 25

**COMODINO A 1 CASSETTO**  
1 DRAWER NIGHTSTAND



**28DM43** | *sx/dx - th/rh* | ↔ cm 44,9 ↗ cm 43,3 ↓ cm 44,2

**28DM63** | *sx/dx - th/rh* | ↔ cm 58,3 ↗ cm 43,3 ↓ cm 44,2

**COMODINO A 2 CASSETTI**  
2 DRAWERS NIGHTSTAND



**28DM40** | *sx/dx - th/rh* | ↔ cm 44,9 ↗ cm 43,3 ↓ cm 44,2

**28DM60** | *sx/dx - th/rh* | ↔ cm 58,3 ↗ cm 43,3 ↓ cm 44,2

**COMODINO A 2 CASSETTI**  
2 DRAWERS NIGHTSTAND



**28SM63** | ↔ cm 58,3 ↗ cm 52 ↓ cm 121

**SETTIMANALE**  
SEVEN DAYS



**28SM60** | ↔ cm 58,3 ↗ cm 52 ↓ cm 121

**SETTIMANALE**  
SEVEN DAYS



**28CM13** | ↔ cm 127,1 ↗ cm 52 ↓ cm 82,6

**COMÒ**  
DRESSER



**28CM10** | ↔ cm 127,1 ↗ cm 52 ↓ cm 82,6

**COMÒ**  
DRESSER



FINITURE E COLORI / FINISHES AND COLOURS

**NOBILITATI**  
COATINGS



**MATERICO BIANCO**  
WHITE TACTILE

**MATERICO LACCATO OPACO (LACCATI MERCANTINI E LACCATI RAL)**  
MATT TACTILE LACQUERED FINISH (MERCANTINI LACQUERS AND RAL LACQUERS)

Per conoscere la gamma completa dei colori  
consulta la cartella Laccati Mercantini.  
To see the full range of colours  
see the Mercantini Lacquer chart.

**NOBILITATI PORO A REGISTRO**  
REGISTER PORE COATINGS



**OLMO CHIARO**  
LIGHT ELM

**ROVERE FIAMMATO**  
FLAMED OAK

**LACCATI**  
LACQUERS



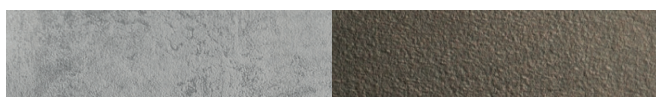
**LACCATI RAL LUCIDI/OPACHI**  
RAL LACQUERS GLOSSY/ MATT

**LACCATI MERCANTINI LUCIDI/OPACHI/GOFFRATI**  
MERCANTINI LACQUERS GLOSSY/MATT/EMBOSSED

SOLO PER I FRONTALI  
ONLY FOR FRONT PANEL

FINITURE MANIGLIE PROFILO E LACCATE  
LACQUERED AND PROFILE HANDLE FINISH

**DECORATIVI**  
DECORATIVE EFFECTS



**EFFETTO CEMENTO**  
CEMENT EFFECT

**EFFETTO RUGGINE**  
RUST EFFECT

**LACCATI**  
LACQUERS



**LACCATI RAL OPACHI**  
RAL LACQUERS MATT

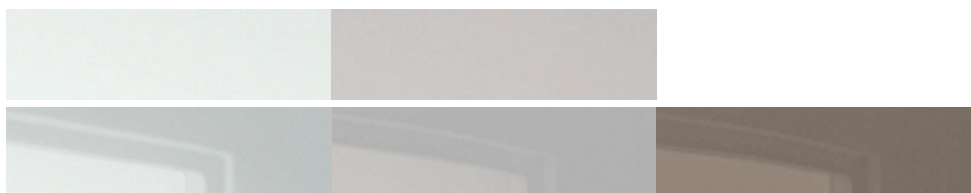
**LACCATI MERCANTINI OPACHI/GOFFRATI**  
MERCANTINI LACQUERS MATT/EMBOSSED

FINITURE MANIGLIE VETRO  
GLASS HANDLE FINISH

**VETRI EXTRACHIARI VERNICIATI**  
EXTRA-CLEAR PAINTED GLASSES

ACIDATI  
ETCHED

VERNICIATI  
PANTED



**BIANCO**  
WHITE

**GRIGIO**  
GREY

**TORTORA**  
DOVE GREY